

# Ripple Maker Guide



# GUINNESS

SECTION 1: The Kit



GUINNESS



# RIPPLE KIT ITEMS

Ripple Maker + Power Cord + Drip Tray + Wifi Dongle + Beer Mat for tray



Lume Cube Mobile Light + Smartphone holder



2 Malt Cartridges



MiFi



Raspberry WiFi Adapter



Extension Cord



Frame

**\*\*Ensure you have all items prior to arriving at event\*\***



# THE MACHINE

- 6 ft long power cord
- Must be placed near outlet
- Runs on WiFi to print personal images, can print preset images without WiFi

Width: 8.5in/ 222mm Height: 23in /495mm



# UNBOXING & SETUP

- Place the Ripple Maker on a surface level (table, countertop, bar top.)
- Plug into a nearby electrical outlet.
  - Ideal position is close to bartender/taps
- Connect the power cord to the power input located at the back of the Ripple Maker. Plug the other end into the wall outlet.
- Unbox the Edimax (WiFi adapter) and insert it into the USB port on the back of the Ripple Maker
- Switch on the Ripple Maker by pressing the on/off button at the base of the Ripple Maker and wait for the system to boot up

**\*It is important to always keep the Ripple Maker on and plugged in while executing an event. If the Ripple Maker turns off, it will dry out the pod and not print properly. \***



## SECTION 2: The Setup



# GUINNESS

# UNBOXING & SETUP CONT.

- Attach LumeCube to mobile device using smartphone holder





SECTION 3: WiFi Connection  
(For Custom Ripples ONLY)

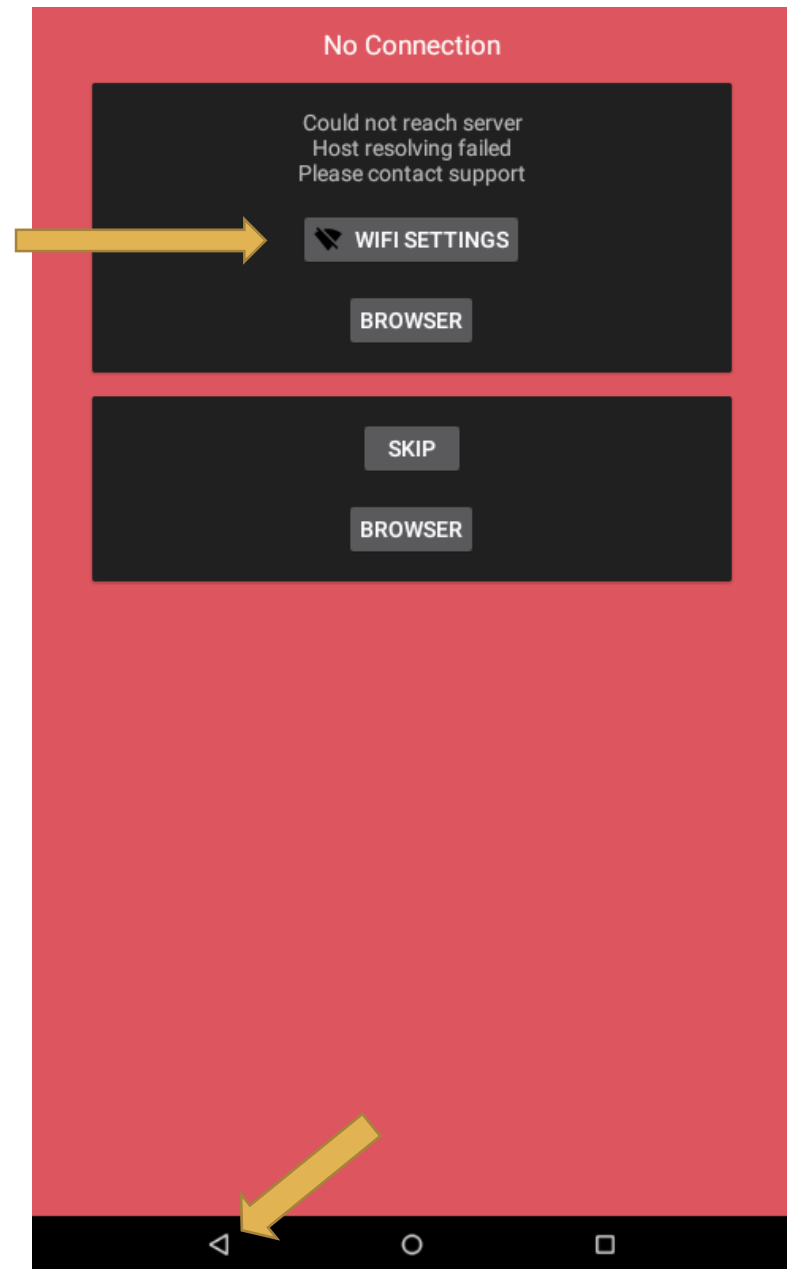


GUINNESS



# WIFI CONNECTION

- Select "Wifi Settings" in pop up screen
- Turn on Mifi
- Select your WiFi connection (MKTG provided MiFi)
  - Enter password
- Click connect
- Hit back button (triangle)
- \*You can print preset Ripples without wifi connection\*



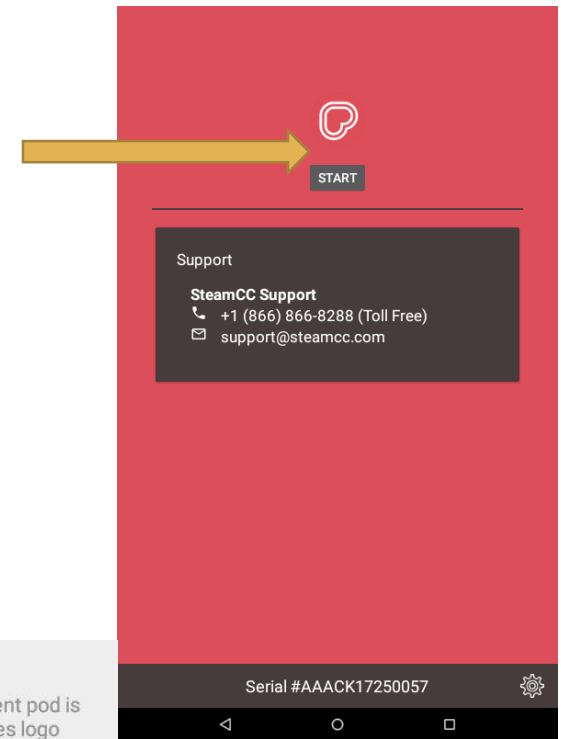
SECTION 4: Pod  
Insertion/Replacement



GUINNESS

# POD REPLACEMENT

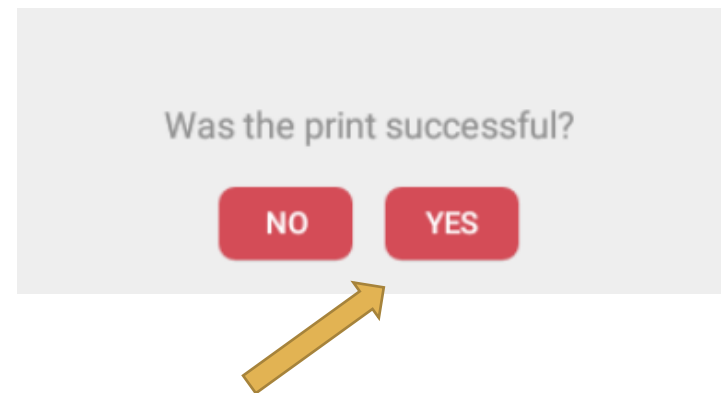
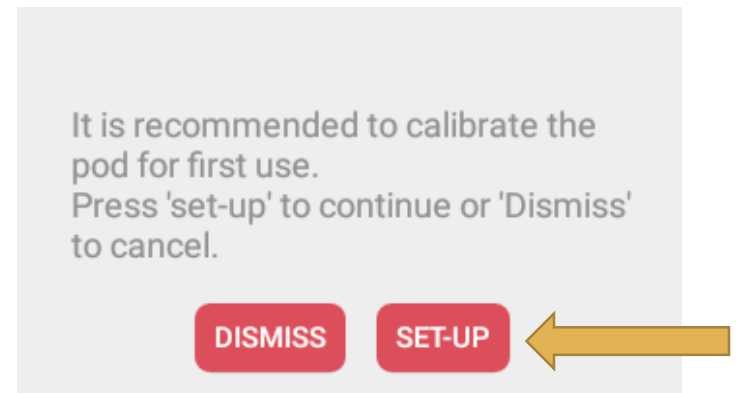
- Click “START”
- Click the hamburger (3 lines) in the top left corner
- Select “Replace Pod”
- Unpack the pod from box and plastic protector, make sure your pod looks like the one pictured on the right and click “ACCEPT”
- **Swipe left** through the instructions prompted on screen to install pod until you see green check mark





# POD REPLACEMENT (CONT.)

- Move top of ripple maker back into place
- Select “SETUP” when prompted with this:
- Click START and **swipe** through steps prompted on the screen to test the pod
- It will then ask you if the print was successful
- See next slide for successful test print photos

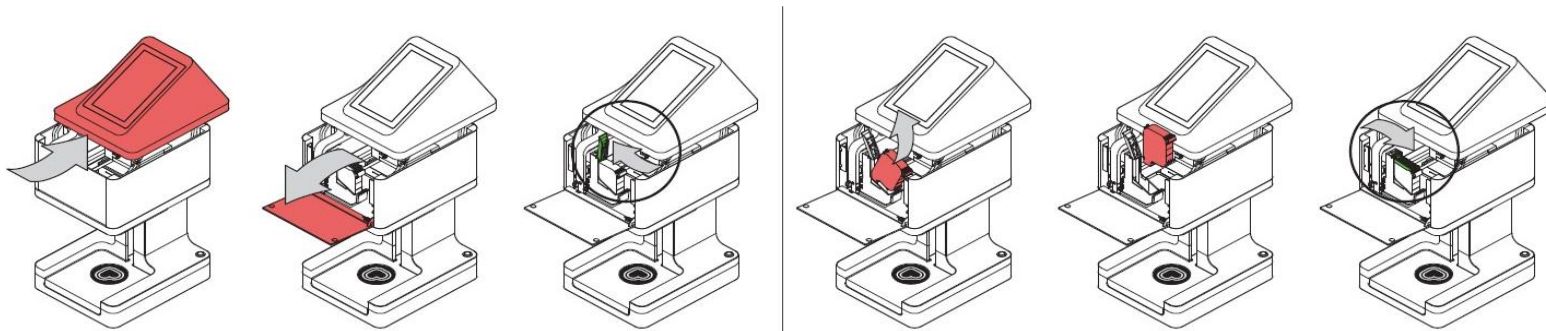


# POD SETUP VISUALS

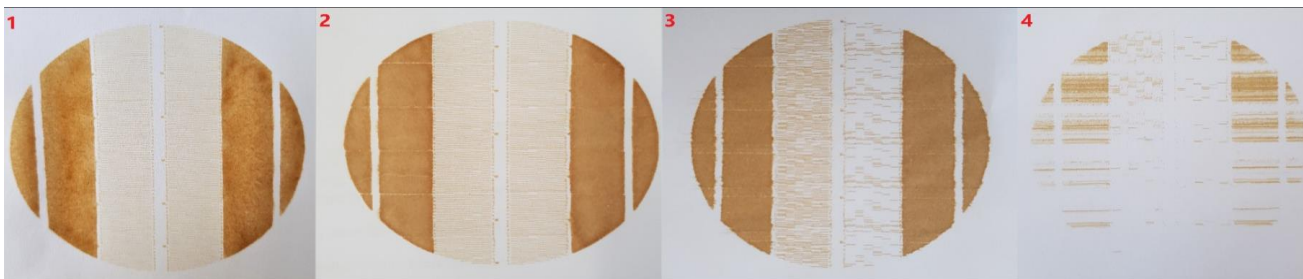
\*KEEP PLASTIC PROTECTIVE COVER AND BOX\*

- Test print the new pod and expect your results to look like so, the darker the better:

How to open Ripple Maker to place new pod:



Test paper results:



GUINNESS

# SECTION 5: Printing

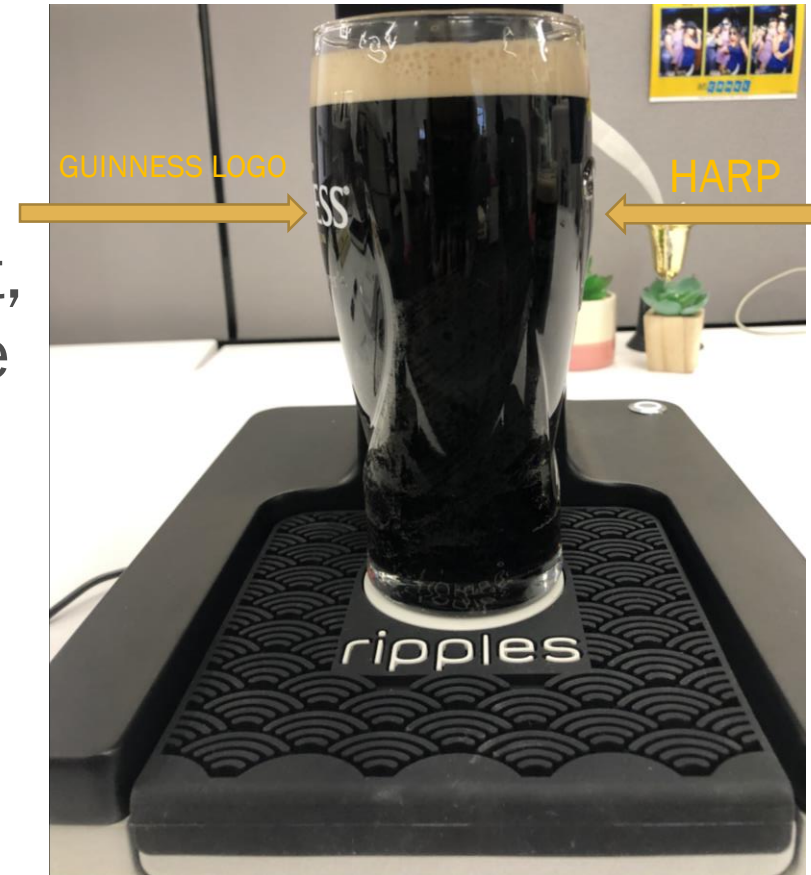


# GUINNESS



# PRINTING PRESET RIPPLES

- Have designated bartender pour Guinness Pint
- Center pint on the Ripples logo with Guinness logo facing the left, and the Harp facing the right side of the machine (see photo)
- On machine screen, tap on the desired image
- The machine will lift the tray and begin to print immediately

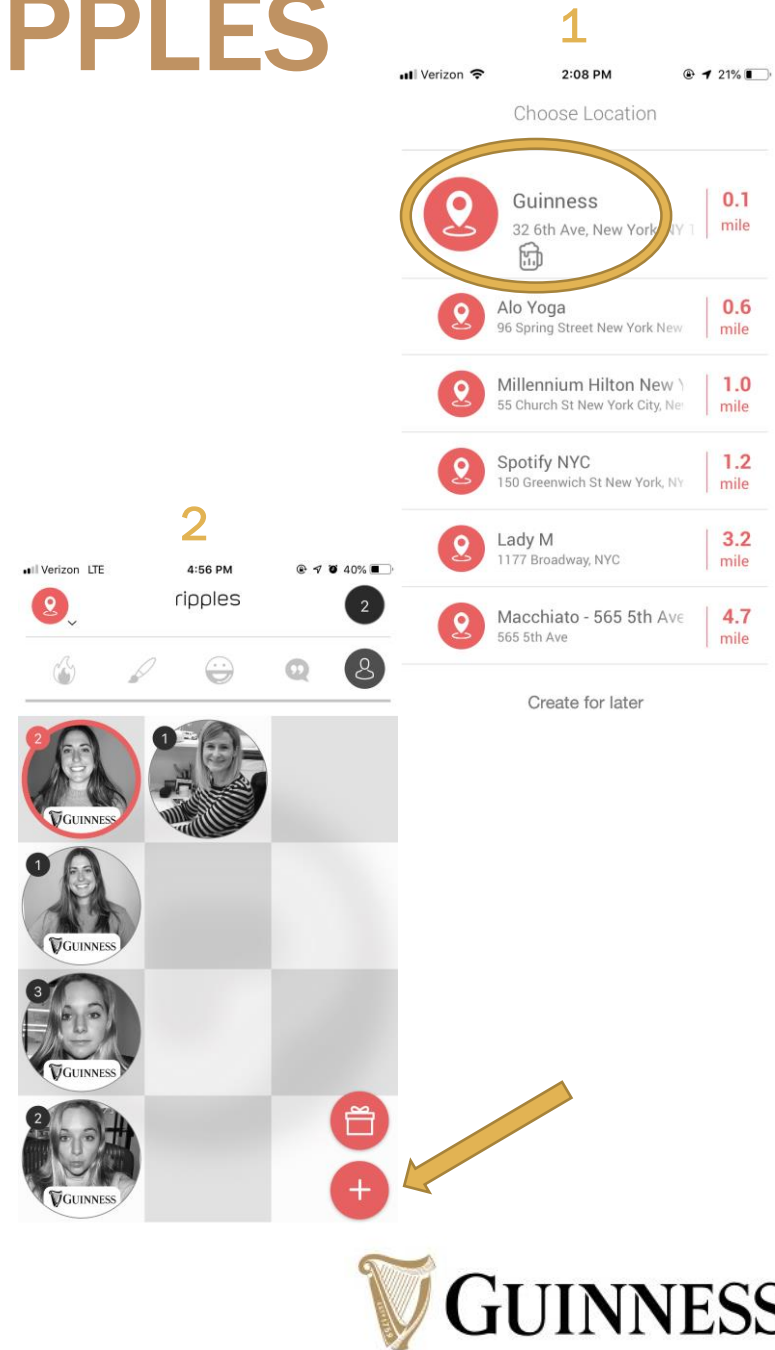


# PRESET GUINNESS RIPPLES



# PRINTING CUSTOM RIPPLES

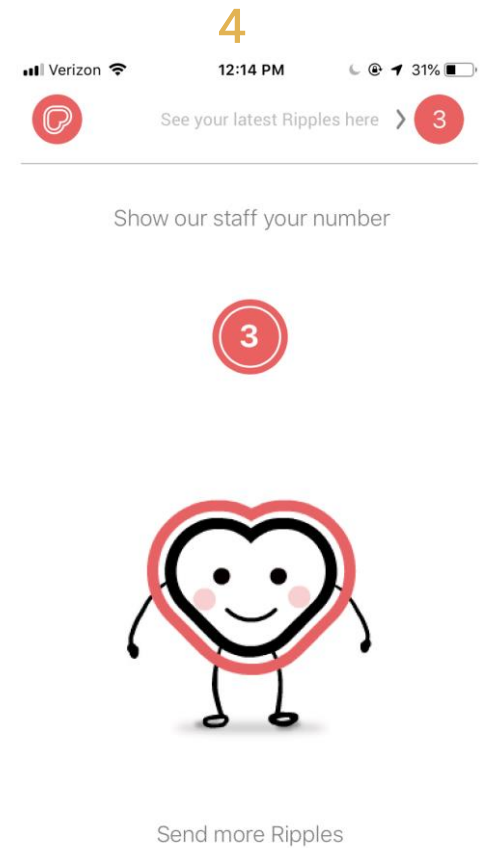
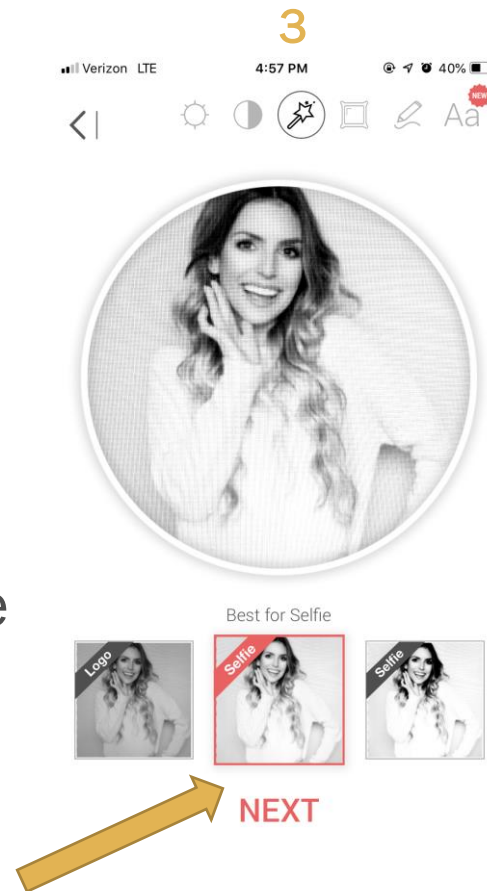
- On the Ripples mobile application: allow the app to have your location
- Select your ripple machine
- Click the “+” sign in the bottom right hand corner
- Click the Camera photo and allow the app to access your camera
- Click icon to flip camera to face consumer
- Take photo of consumer with Lume Cube light attached to your cellular device





# PRINTING CUSTOM RIPPLES (CONT.)

- Zoom in or out to adjust the photo properly
- Click “Next”
- Click “Confirm”
- “Show staff your number” will be the next screen that appears
- Go back on to the machine screen, click the mobile cell phone icon in the top right corner
- Select image sent from mobile for print



# PRESENTATION

- Hand pint to consumer with Guinness logo facing them



SECTION 6: Post Event Clean Up /  
Reboxing

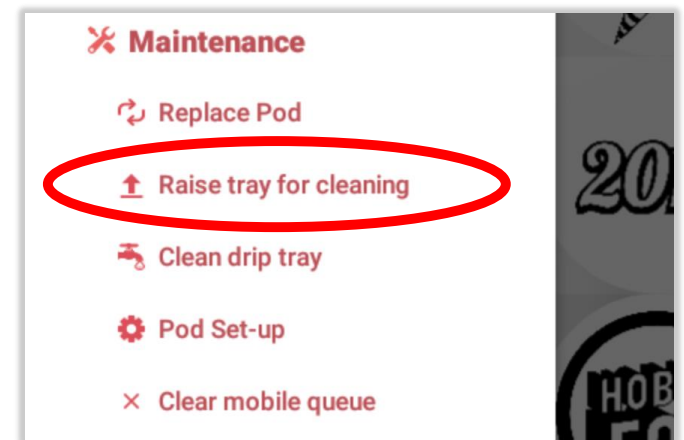


GUINNESS



# REBOXING AFTER YOUR EVENT

- Clean the Drip Tray
  - If you don't... sticky malt extract will leak in transit
- Clean the Ripple Maker: Use wet ones to clean screen and drip tray
- Tap the settings icon, then tap “Raise tray for cleaning”, clean underneath
- Remove and store the Pod using the original plastic cover and box
- To turn off the machine, hold the power button down for 8 seconds and then unplug the power cord
- Store in a safe place and repeat!



# SECTION 7: Appendix & Ripple FAQs



# GUINNESS

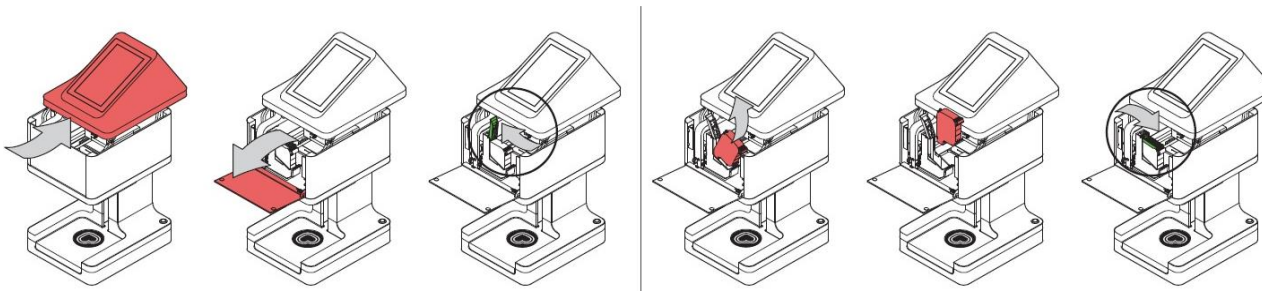
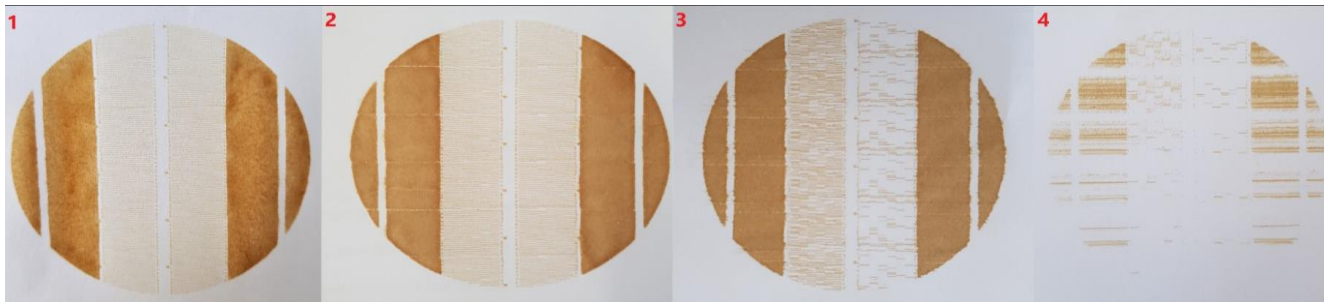
# APPENDIX

- 1) Pod setup if your pod test FAILS
- 2) Icons
- 3) Main features screen
- 4) Ripple Consumer FAQs

# POD SET UP (CONT.)

\*KEEP PLASTIC PROTECTIVE COVER AND BOX\*

- If your pod test looks like 3 or 4 pictured below run an Advanced Pod Setup
- Verify that there is no residues/beer foam on the Pod nozzles - look at the bottom of the Pod housing ; To clean, remove pod, dip in boiling water 30 seconds, dry with paper towels, and return pod to housing
- Tap the setting icon → tap utilities in the menu → tap advanced pod setup. This should clear the clog.



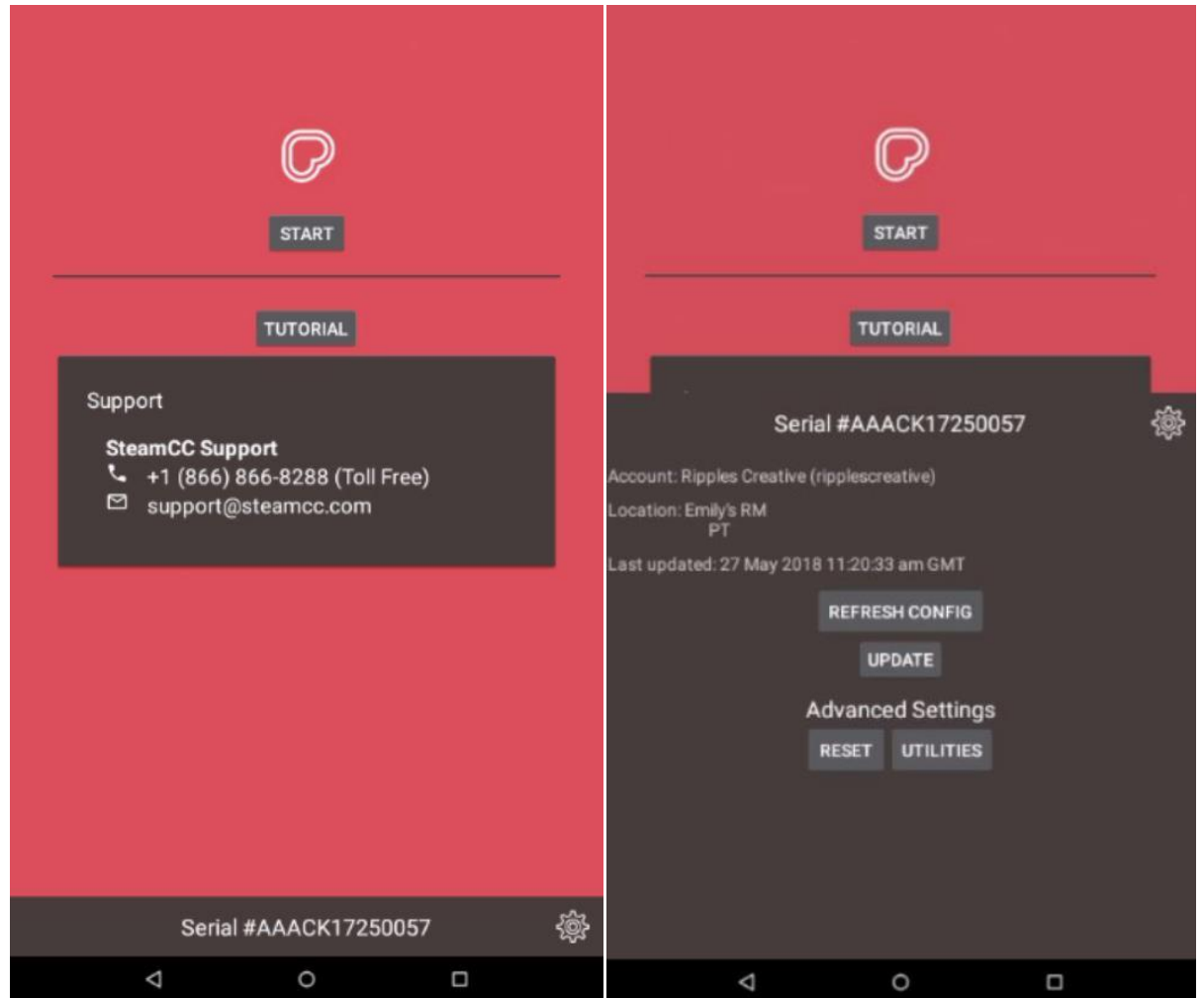


# ICONS IN THE TOP BAR MENU

- Ripples logo = returns to the start screen
- Drop icon = print count history ; you can change the view from daily to weekly
- Wifi icon = tap here to connect to your local wifi
- Settings icon = settings menu
- Mobile icon = access photos sent via the mobile app

# MAIN FEATURES SCREEN

- Start= Access the main screen for the Ripple Maker
- Tutorial= Access the on screen tutorial
- Ripples support contact details
- Serial number of the Ripple maker;
- Tap SETTINGS icon to open:
  - Account name
  - Location name and address
  - Refresh config= update Brand/Location and to latest Ripple Maker FirmWare configuration
  - Advanced setting= Access to Ripple Maker Utilities menu



# RIPPLE FAQs

- What is the “ink” made out of?
  - The Ripple Pod is made out of water and barley malt extract
  - Gluten free
- Can I use the Ripple Maker without WiFi?
  - YES, you can print already uploaded, preset ripples without WiFi
- Do I need to use the LumeCube light when taking photos of consumers?
  - YES, the LumeCube light will help take clearer and better lit pictures of our consumers for their pints

