



HOW TO CREATE MULTI COLOR DESIGN

■ Welcome

Here is a detailed guide to creating multi-color printable content for your RM II Pro.

Making multi-colored designs requires a graphic designer.

We hope you'll find this guide helpful and effective.

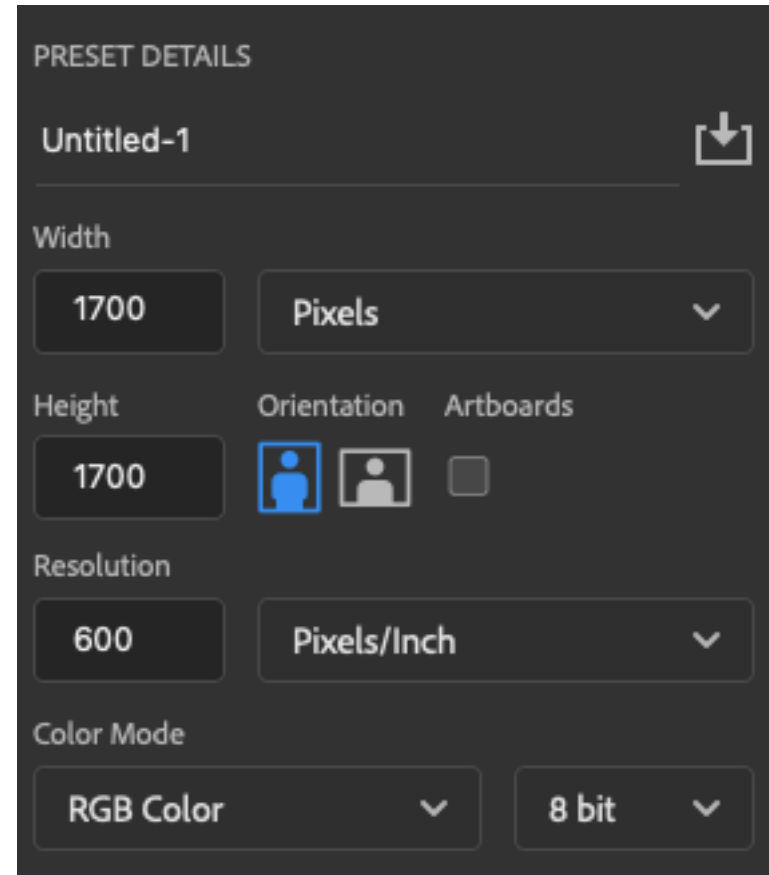
☰ New file

Open a new Adobe Photoshop file.

RESOLUTION 600 Pixels/Inch

FILE SIZE 1700*1700 Pixels

COLOR MODE RGB Color

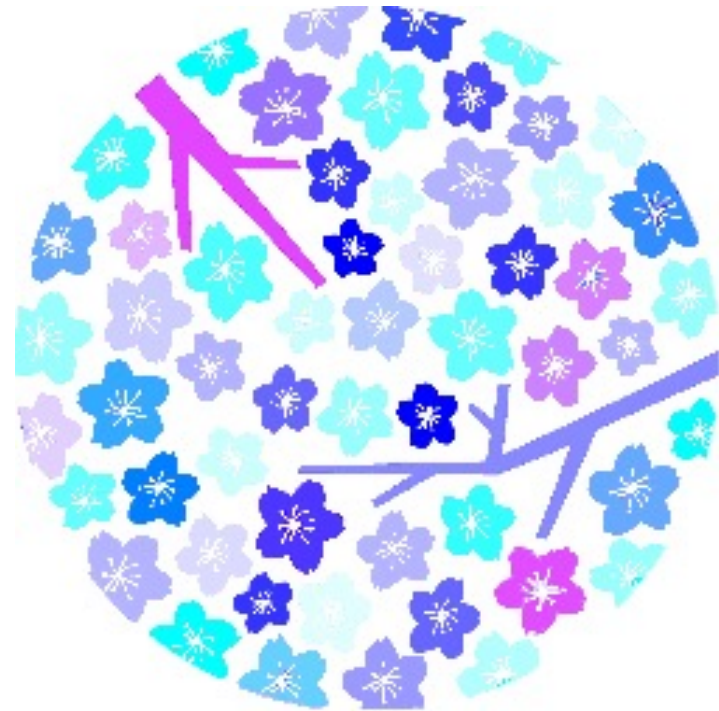


A



2 Extracts → Without overlap.

B



Chameleon + → With overlap.

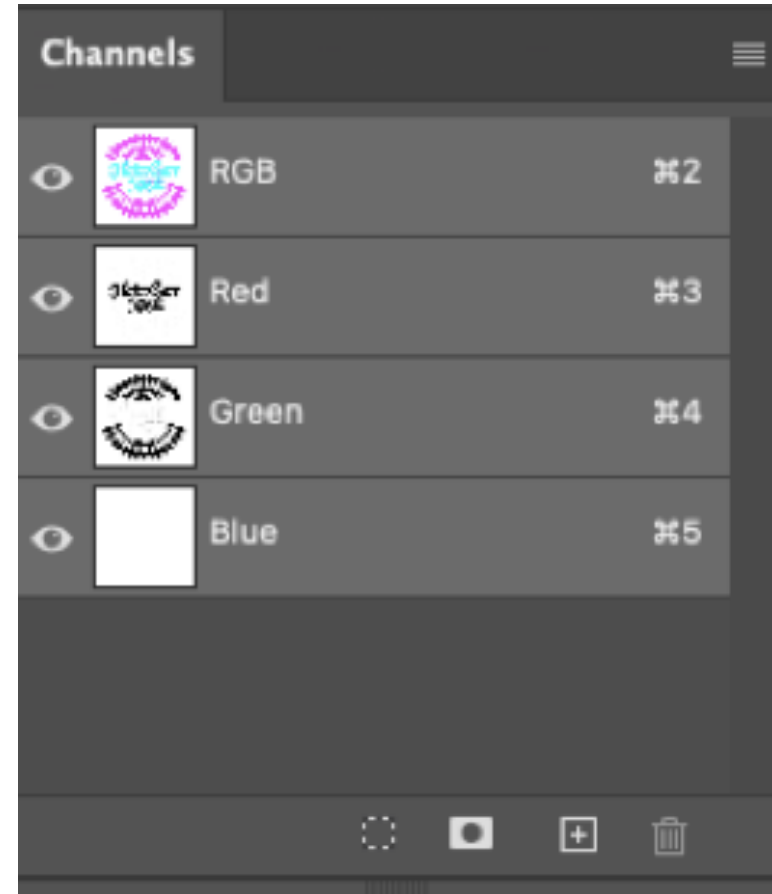
RGB channels

Delete data in blue channel

Red channel Right pod

Green channel Left pod

Blue channel empty pod



Save & Upload

Save your file as JPG \ PNG.

"Upload" is possible only via the Ripples portal.



Steps in Ripples Cloud

1. Select Upload Designs
2. Choose your Multicolor designs from your PC
3. Click "YES" to Multicolor
4. Click "UPLOAD ALL"

Upload

Images selected



Tags:

Add a tag

Personalized: YES NO

Shareable: YES NO

Multicolor: YES NO

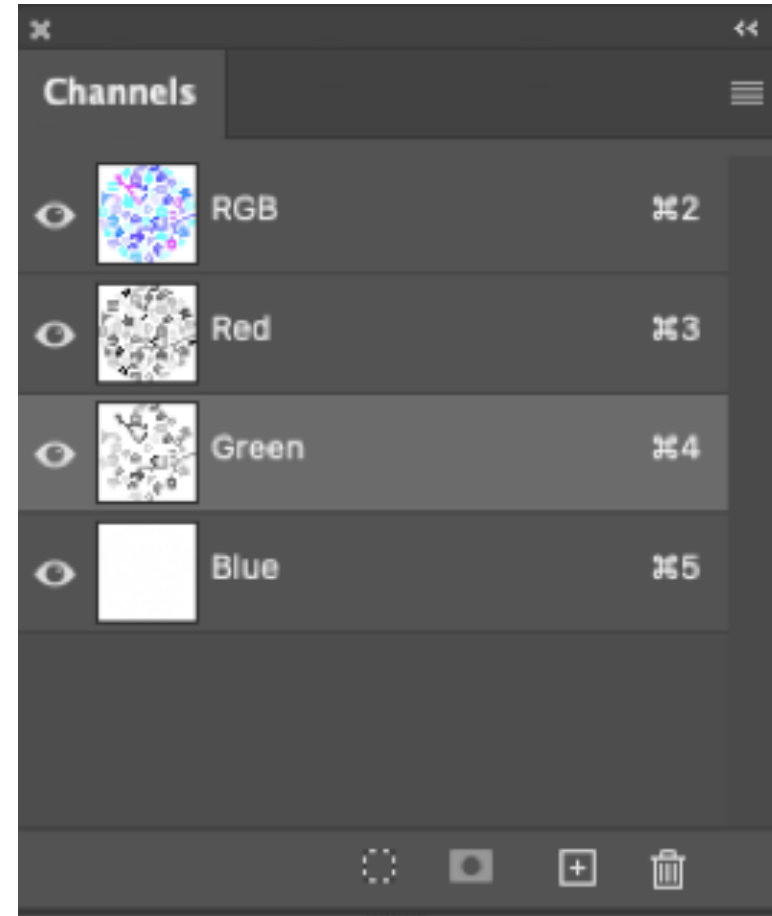
RGB channels

Delete data in blue channel

Red channel Right pod

Green channel Left pod

Blue channel empty pod



☰ Save & Upload

Save your file as JPG \ PNG.

"Upload" is possible only via the Ripples portal

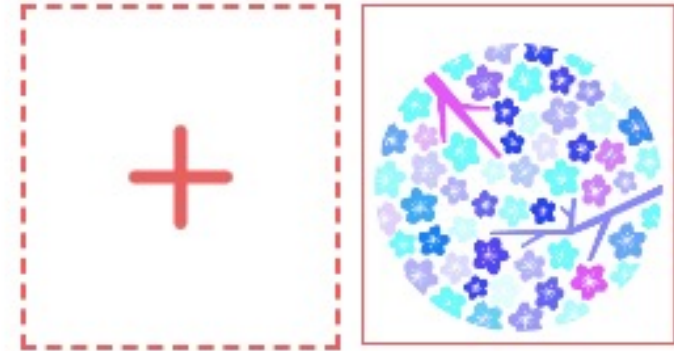


Steps in Ripples Cloud

1. Select Upload Designs
2. Choose your Multicolor designs from your PC
3. Click "YES" to Multicolor
4. Click "UPLOAD ALL"

Upload

Images selected



Tags:

Add a tag

Personalized: YES NO

Shareable: YES NO

Multicolor: YES NO

Color chart

Use color chart to set expected hues for each element.

As we work with special food extracts the expected result is not according to the "Photoshop preview" (WYSIWYG) but only based on the attached chart.

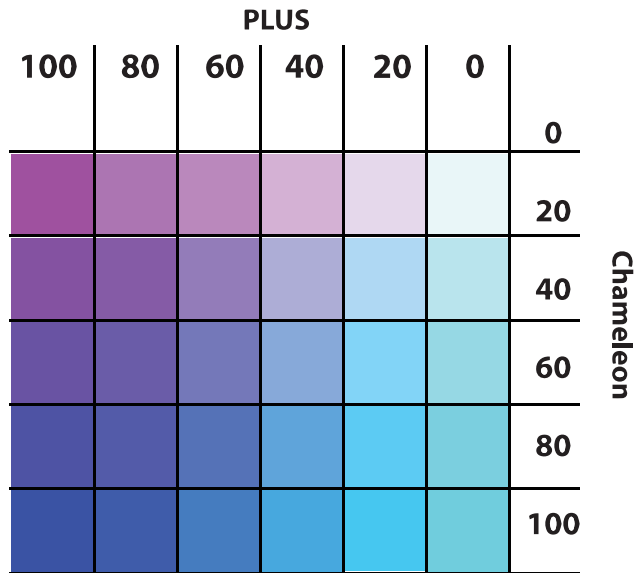
"Photoshop preview"



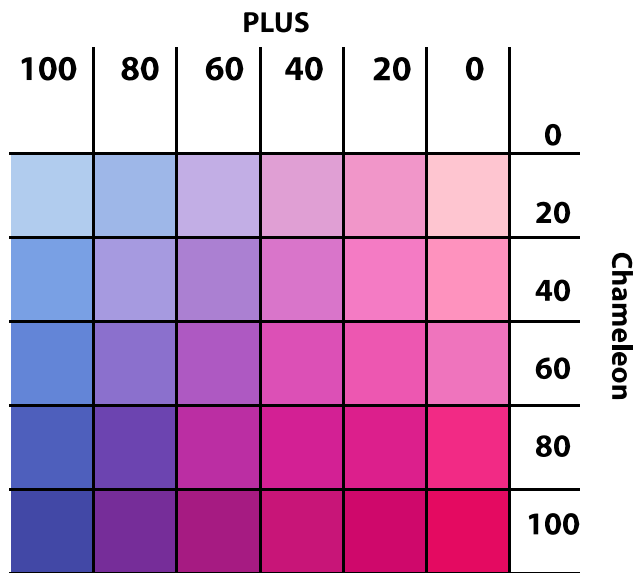
Result on beer



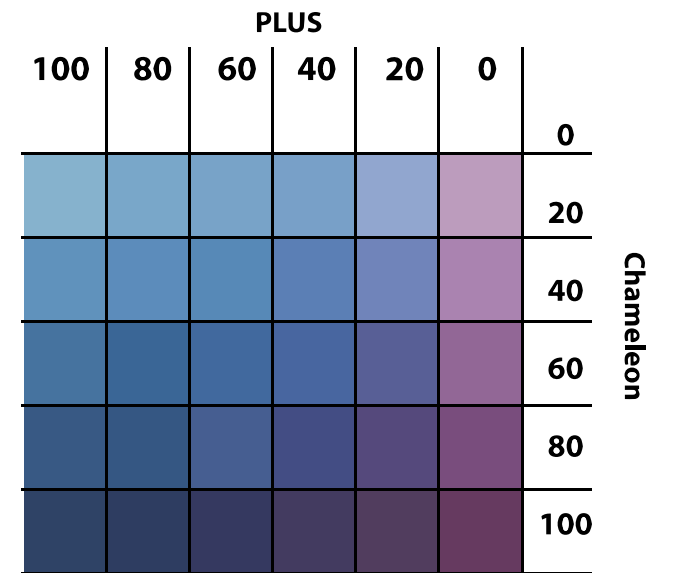
"Photoshop preview"



Result on Guinness beer



Result on coffe



THANK YOU!

We are here for you! |  design@drinkripples.com