



AUTOMATIC MODE

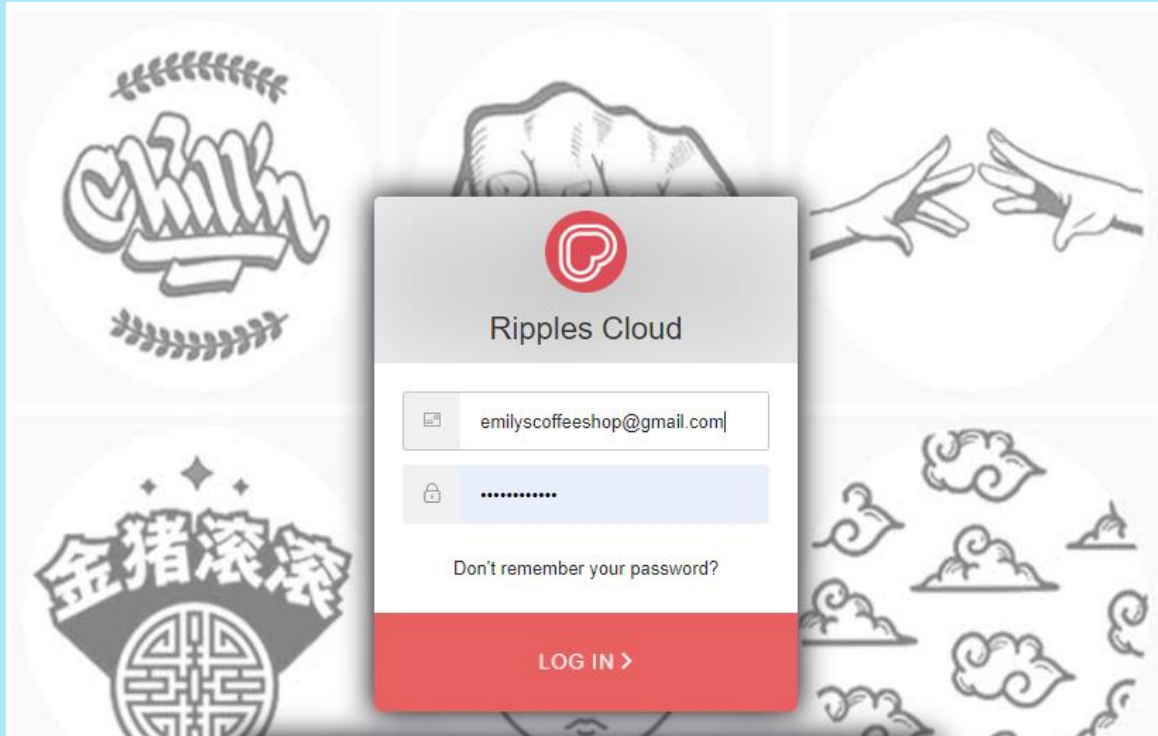
One Click Printing for your busiest times!

When it's just too busy to choose, the Automatic Mode takes out that extra step that can sometimes take longer than you want, for the Ripple Maker II only

When Automatic mode is activated it will randomly select what to print from premade Auto-mode channel that you set up! No decision making required!!!

Keep reading to find out more!!





To get started go to <https://my.drinkripples.com> if you don't have a Ripples Cloud User contact us at support@drinkripples.com *Have your Ripple Maker Serial Number available

We also have two tutorials that can walk you through everything you need to know about the Ripples Cloud.

[Intro to The Ripples Cloud & Advanced Cloud Tutorial](#)



Emily's Coffee Shop >

Edit Ripple Maker

Select Location



Emily's Birthday Party

Following

Channels:

Rollover to see more actions

SELECT CHANNEL

CREATE CHANNEL

Coffee Trends IL
10 ripples

Coffee Trends
42 ripples

Popular Coffee
12 ripples

Coffee Time
12 ripples

Party
4 ripples

Valentines
No ripples

MY NEW RIPPLES
1 ripples

Under the tab Ripple Maker you will see a section called Automatic, click here to start.

▶ Promotions:

▶ Automatic:

My Ripples

Ripples Library

My Channels

WORK MODES

My Promotions

DEVICES

Ripple Maker

Mobile

WEB APP

Skin Designer



Emily's Coffee Shop >

My Ripples

Ripples Library

My Channels

WORK MODES

My Promotions

DEVICES

Ripple Maker

Mobile

WEB APP

Edit Ripple Maker

Select Location



Emily's Birthday Party

Following

▶ Channels:

▶ Promotions:

▼ Automatic:

Rollover to see more actions

This feature is only supported on the Ripple Maker II

SELECT CHANNEL

CREATE CHANNEL



You can select a previously created channel or make a new one by clicking create channel

▼ **Automatic:**

Rollover to see more actions

This feature is only supported on the Ripple Maker II

SELECT CHANNEL

CREATE CHANNEL



You can select a previously created channel or make a new one by clicking create channel. Let's click create channel.

Create Channel

Automatic Channel



Channel Icon

SAVE

Edit Ripple Maker

Select Location Emily's Birthday Party

Following

Channels:

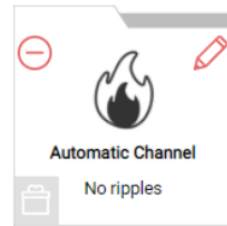
Promotions:

Automatic:
Rollover to see more actions

SELECT CHANNEL

CREATE CHANNEL

This feature is only supported on the Ripple Maker II



Name and create your new channel by clicking save.

Now you can edit your new Automatic channel by clicking on the pencil icon.

Edit Ripple Maker / **Edit Channel**

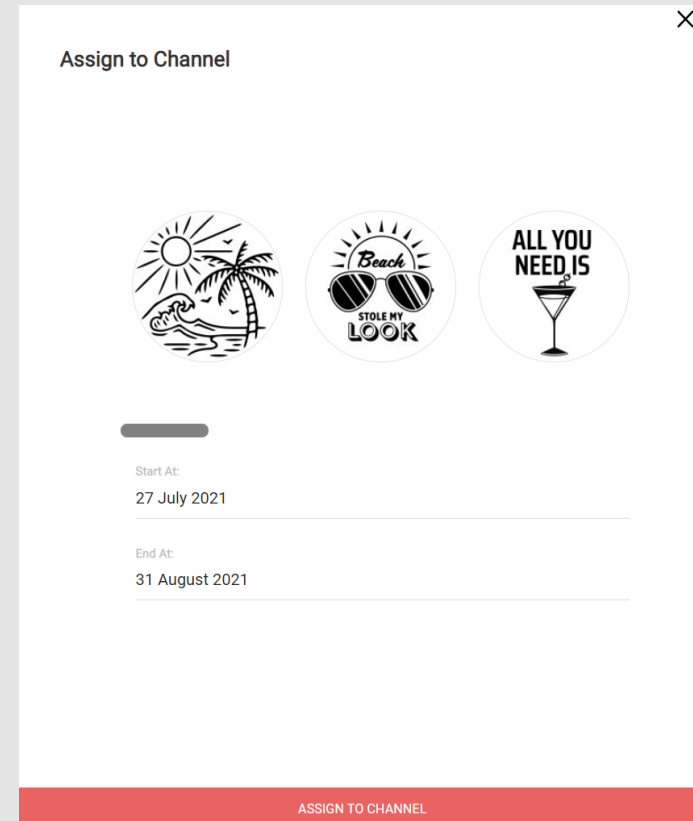
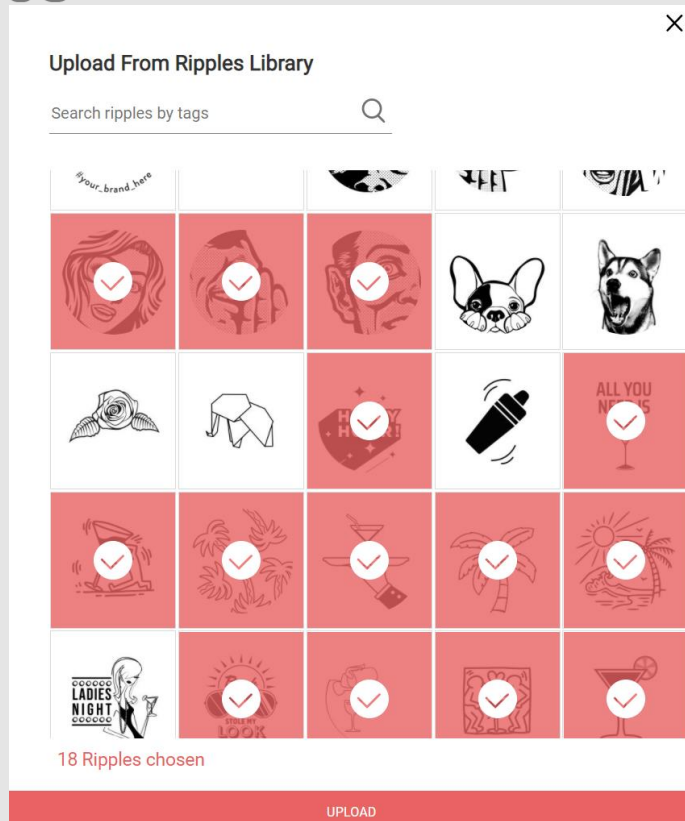
Automatic Channel

You don't have any assigned ripples in this channel

[START BY ASSIGNING RIPPLES](#)

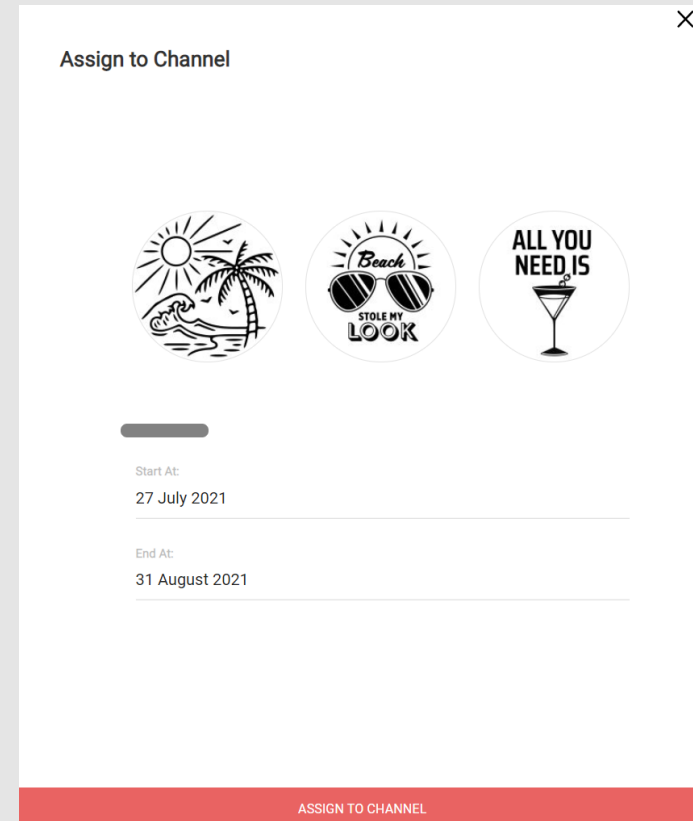
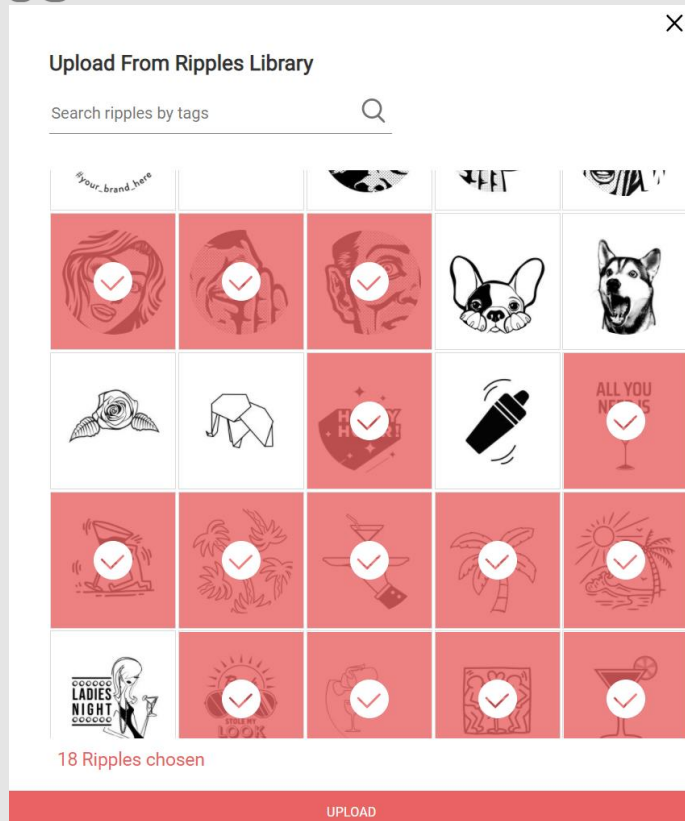
Click “Start By Assigning Ripples” to choose from previously uploaded designs.
Or click on the computer icon or the create tool in the top right-hand corner to upload designs directly from your computer.

TIP: The Create tool is good for designs that are not sized to 1700X1700pixels



Hold “ctrl” and click to add more than one design from your Ripples Library.
Click “UPLOAD”.

Select your dates and click “ASSIGN TO CHANNEL”

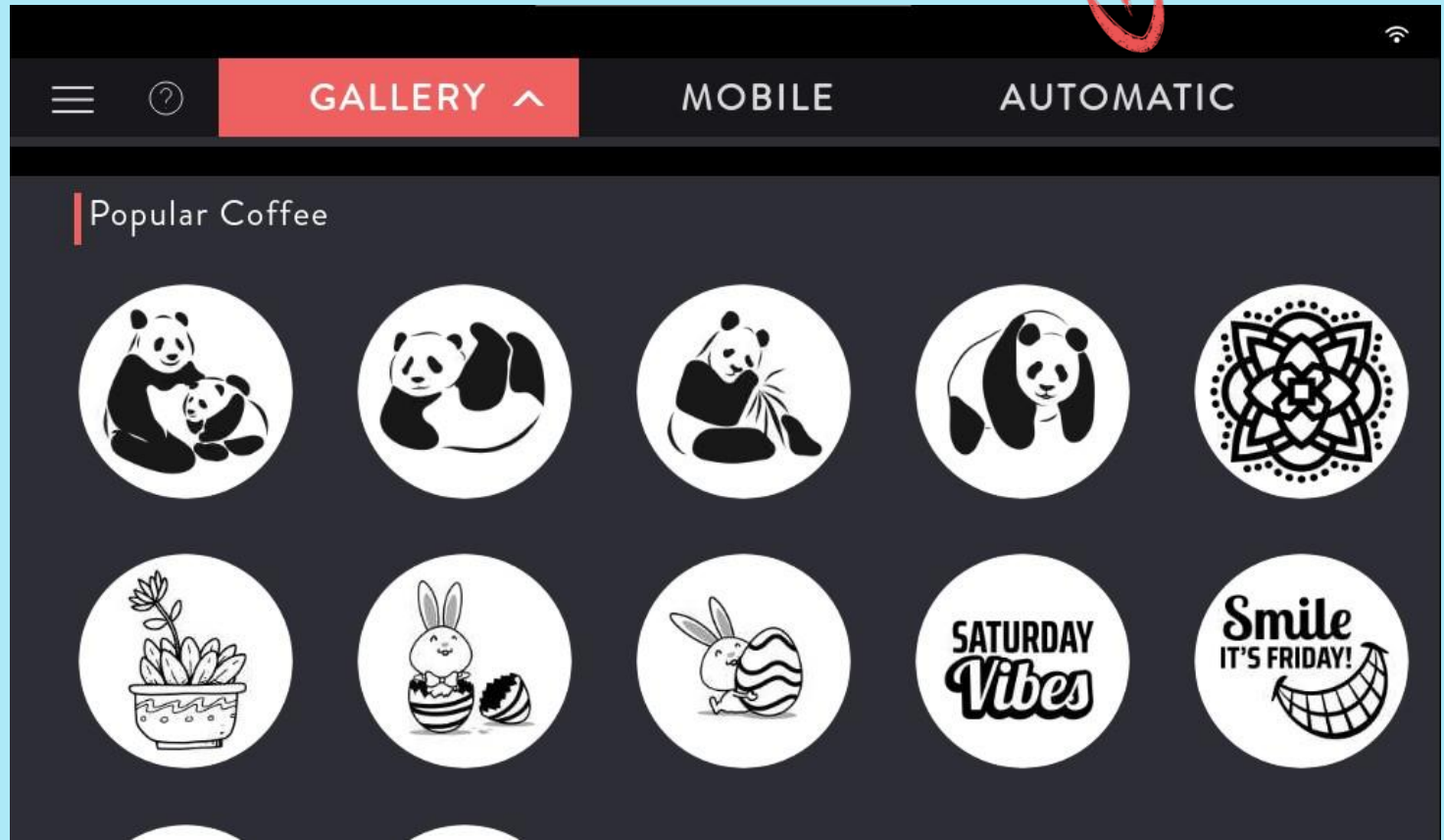


Hold “ctrl” and click to add more than one design from your Ripples Library.
Click “UPLOAD”.

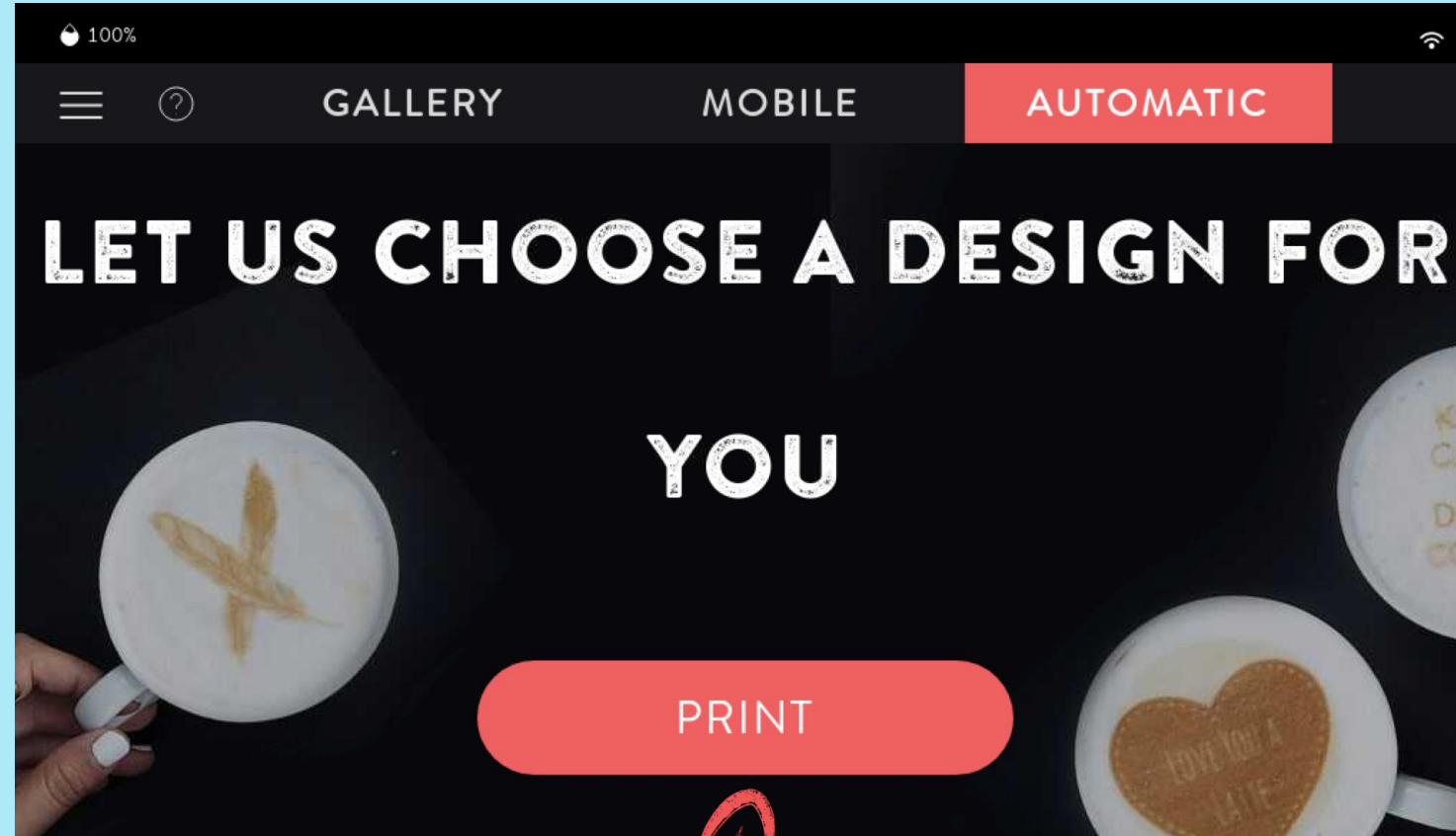
Select your dates and click “ASSIGN TO CHANNEL”



Access your new Automatic Channel by click on "AUTOMATIC" On your Ripple Maker II screen.



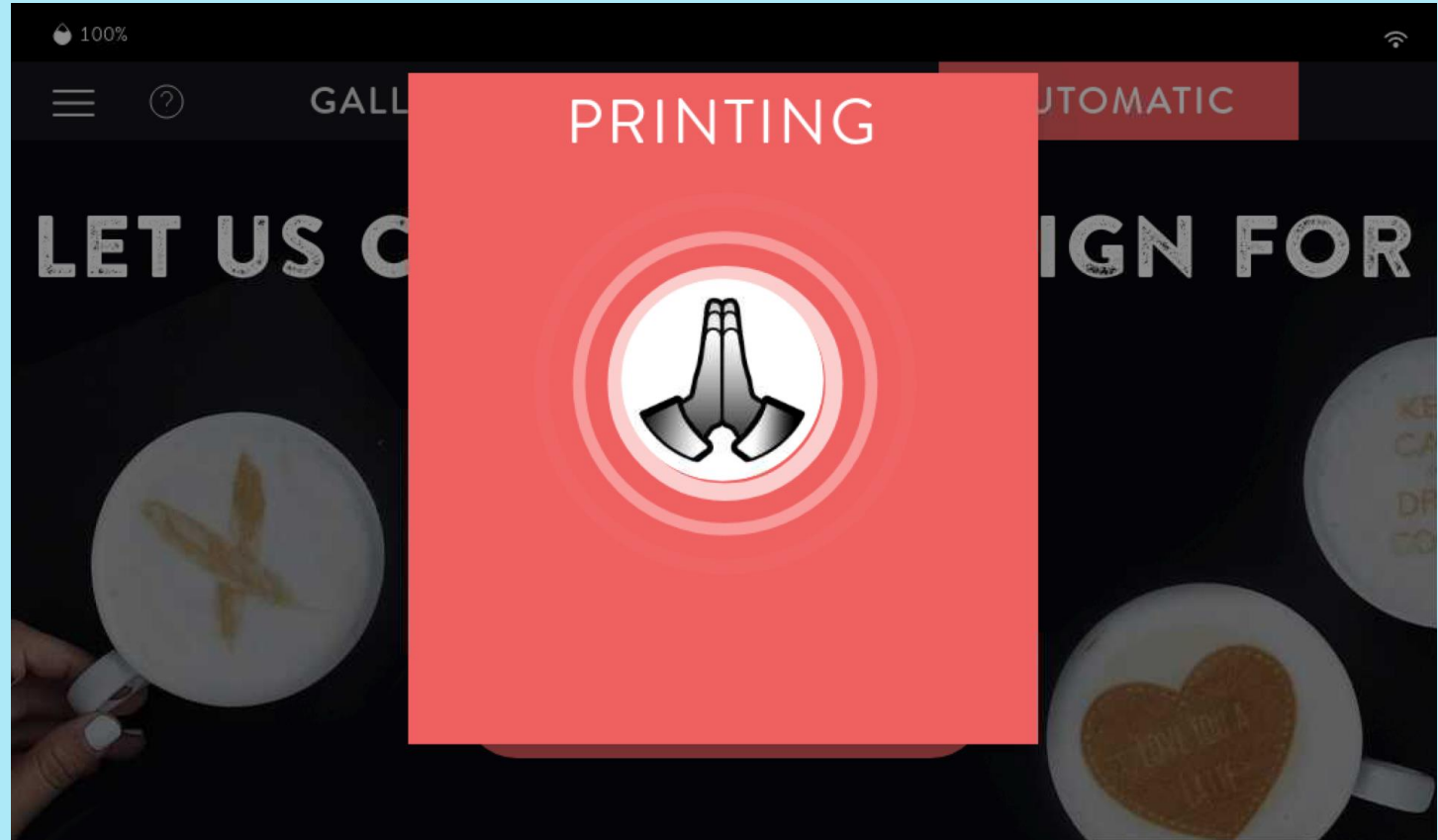
Automatic mode help quicken the pace by cutting out the need to choose a design.



Tap print and the Ripple Maker II will select one of the designs that you added to the Automatic channel on the Ripples Cloud!



The Ripple Maker II will then print at random one of the designs, in the default print size selected in the settings.



If you have any questions, or need a user for the Ripples Cloud please reach out to us at support@drinkripples.com